



GREER PREPARATORY ACADEMY

The mission of Greer Preparatory Academy is to produce well-rounded students using a proven Classical Instructional Model and curriculum, Core Knowledge, through collaborative, engaging, and character-building learning experiences.

Purpose of Greer Prep

- Provide an additional educational opportunity for elementary and middle school children in our area.
- Strengthen the connection between Greer Prep and Greer Middle College (GMC), creating a seamless pathway for students.
- Offer more in-depth preparation to equip students for their educational journey ahead.
- Build and sustain the capacity of our athletic program, ensuring students have robust opportunities for growth and teamwork.
- Increase the organization's overall capacity, longevity, and culture, supporting a thriving, long-lasting school community.



FACILITIES to Include:

Ample Classrooms

Cafe to include indoor/outdoor

Gymnasium

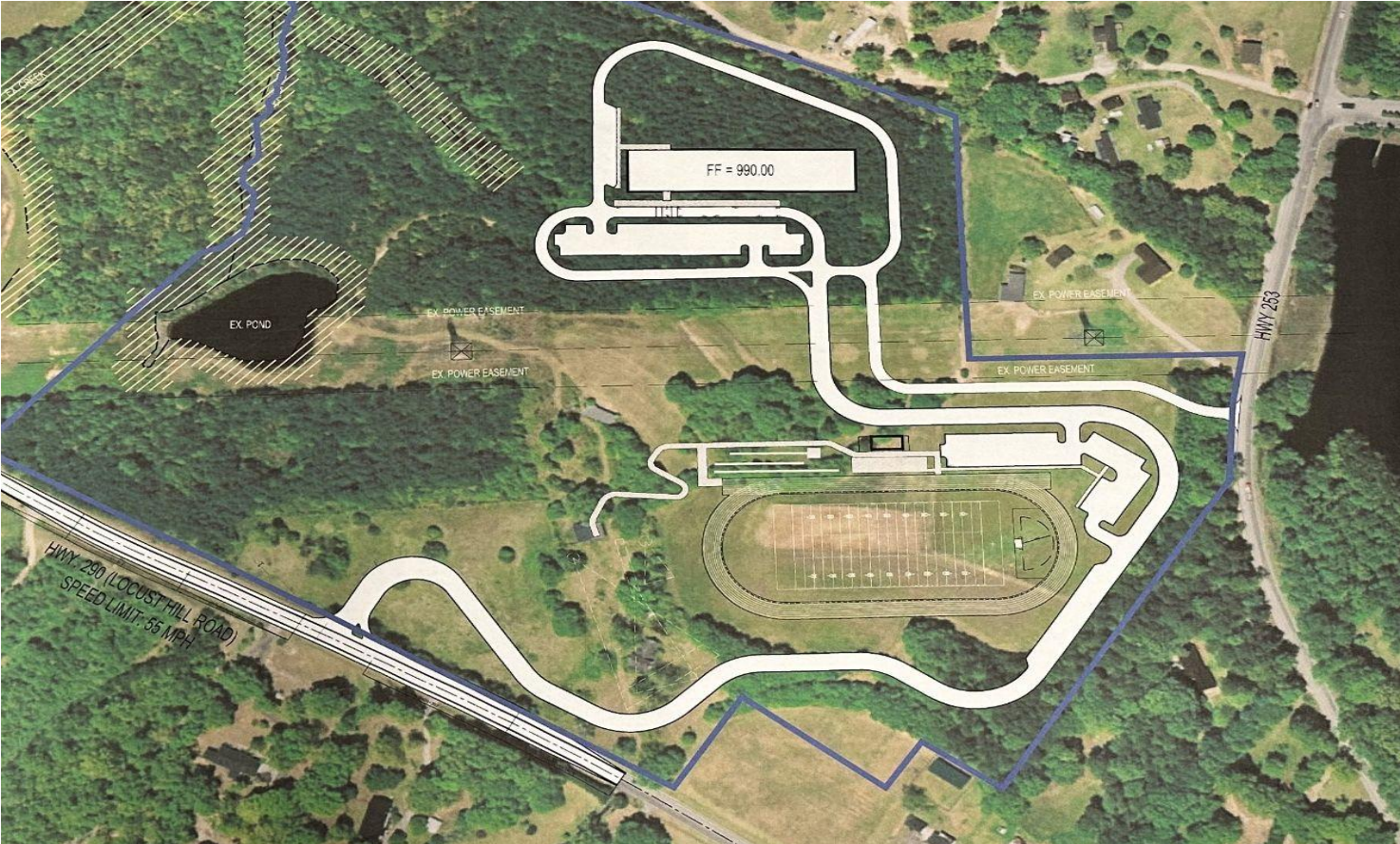
Athletic Facilities







FACILITIES CONT.



LOGISTICS

- **School Day: 7:45 AM – 2:15 PM- Monday-Thursday**
 - (arrival begins at 7:30 AM, pick up ends at 2:25)
 - **Early release on Fridays, 12:15**
 - **Allows for weekly Professional Development for our teachers**
 - **Vertical alignment with GMC Teachers**
- **Schedule: 5 days a week, with morning announcements and structured class periods**
- **Lunch & Break: Separate Times, supervised daily**
- **Safety First: Phones turned in on arrival, clear hallway (no lockers) and structured dismissal procedures**



General Information

Uniforms & Safety

- School uniforms required
 - a. Via Greer Prep vendors (2 options)

Student Support

- No 50 Policy — grades reflect actual performance
 - a. (no automatic minimum score)
- GPA admin & teachers provide tailored support programs

Community Service

- Students- 25 hours per year in service to GPA and our community
- Parents- 18 hours per year in service to GPA

Lunch Offerings

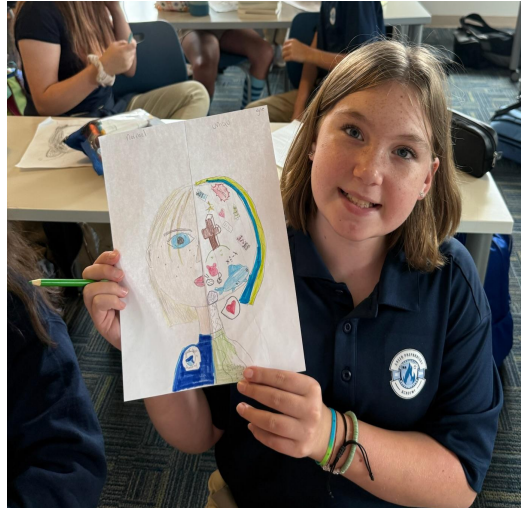
- BYOL
- Frozen Fridays
- Celebration Days



Other Offerings

Extended Day Program

- Exploring morning session
- Already offering afternoon session
- Offered for families at a low cost (daily/weekly options)
- Provides homework help, and academic support



EDUCATIONAL FOCUS

- Classical Model of Education
- Core Knowledge Curriculum
- Community Service Minded
- Focus on Leadership Training & Character Building



EDUCATIONAL FOCUS 3-5

- **ELA: Core Knowledge, reading/literacy, writing development**
- **Math: hands-on problem solving, back to understanding the basics**
- **Integrated Studies: Experiments, projects, history/geography with Core Knowledge**
- **Essentials : Art, Music/Band/Chorus, PE, Leadership, Spanish**



A DAY AT GREER PREP

Grades 3-5



Four Core Classes

- English
- Math
- Science
- Social Studies



Essentials Classes

- One per day
- Using Push-In Model

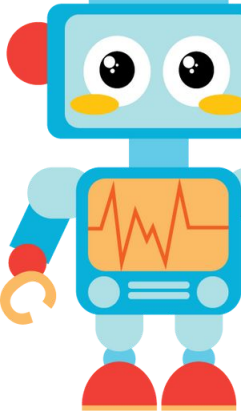


Recess

- *Will follow Push-In model for all special services

Scan
to
Donate!





ESSENTIALS COURSES

Art

Music

P.E.
REQUIRED

Future
Innovators
Lab

Leadership



A DAY AT GREER PREP

Grades 6-8



Four Core Classes

- English/Humanities
 - Math
 - Science
- Leadership



Essentials Classes

- Operate on A day/B Day schedule

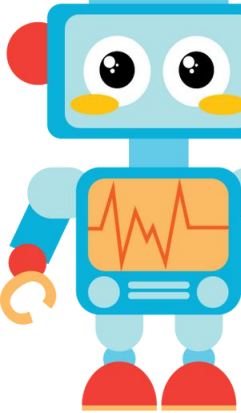


Break

- *Will follow Push-In model for all special services



Scan
to
Donate!



ESSENTIALS COURSES

Art

P.E.
REQUIRED

Band/Chorus

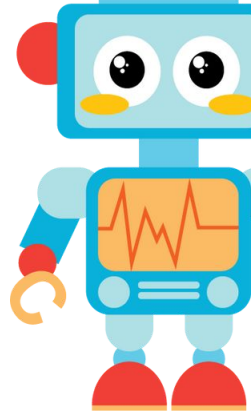
Spanish

Gateway to Tech
Project Lead the Way
courses based on
student interest





MIDDLE SCHOOL ESSENTIALS COURSES



Option 1

1 yearlong course
1 semester course
+ PE

Option 2

3 semester
courses + PE



MATH

6th Grade

7th Grade

8th Grade

On Level
Math

Mathematics
6

Mathematics
7

Mathematics
8

Accelerated
Math
(Challenge)

Mathematics
6 Accelerated

Mathematics
7/8

Geometry &
Statistics

Highschool
Credit

ELA

6th Grade

7th Grade

8th Grade

On Level
ELA

English 6

English 7

English 8

Accelerated
ELA
(Challenge)

Language Arts
6 Accelerated

Language Arts
7 Accelerated

English 1 H

Highschool
Credit

Preparing for GMC

Possible High School Credit Classes

- English 1
- Geometry with Statistics
- Band 1
- Art 1
- Spanish 1
- Possible CTE courses



SCHOOL ATHLETICS



FALL

- GMC Affiliated:
 - Boys and Girls Cross Country
 - Swimming
 - Girls Golf
 - Girls Tennis
- GPA Affiliated:
 - Boys Soccer
 - Volleyball



WINTER

- GPA Affiliated:
 - Girls and Boys Basketball



SPRING

- GMC Affiliated:
 - Boys Golf
 - Boys Tennis
 - Girls and Boys Track and Field
- GPA Affiliated:
 - Girls Soccer



HIRING PERSONNEL TIMELINE

Dream Team Loading!

Interviews- ongoing



ENROLLMENT TIMELINE

January 21- Lottery Window Opens

February 11th Window Closes

February 14th Lottery if needed

February 20th- Decision Day

April 18th Intake Meeting tentatively at GMC

Please use most checked email when applying

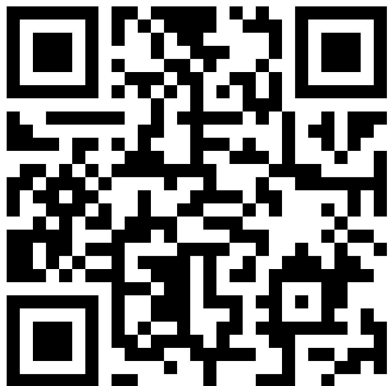


QUESTIONS?

Email admissions@greerprepacademy.org

OR

Scan this QR code and fill in the form with any questions!

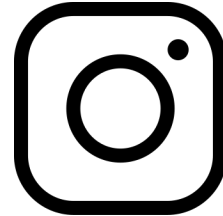


FOLLOW US ON ALL SOCIAL MEDIA



Facebook

Greer Prep Academy



Instagram

@greerprepacademy



Website

<https://greerprepacademy.org/>